



# DREAM

HOTELS & RESORTS

ESCAPE. RESET. RECONNECT.

2020 ISSUE 1





## **WESTERN CAPE**

Piekenierskloof Mountain Resort	4
The Peninsula All-Suite Hotel	8
Le Franschhoek Hotel & Spa	12
Avalon Springs	18
Stonehill River Lodge	20

## **GARDEN ROUTE**

Oaklands on the Knoll	22
-----------------------	----

## **KWAZULU-NATAL**

Blue Marlin Hotel	24
Tala Collection Game Reserve	28
Nibela Lake Lodge	32
Jozini Tiger Lodge & Spa	34
Royal Thonga Safari Lodge	40
Little Switzerland Resort	42

## **GAUTENG**

Mount Savannah Game Reserve	46
Waterfront Guest House	48

## **NORTH WEST**

Finfoot Lake Reserve	50
----------------------	----

## **MPUMALANGA**

Burchell's Bush Lodge	54
Mjejane Bush Camp	56
Jackalberry Ridge	58

## **MOZAMBIQUE**

Bilene Club Lodge	60
-------------------	----



## OUR HOTELS & RESORTS

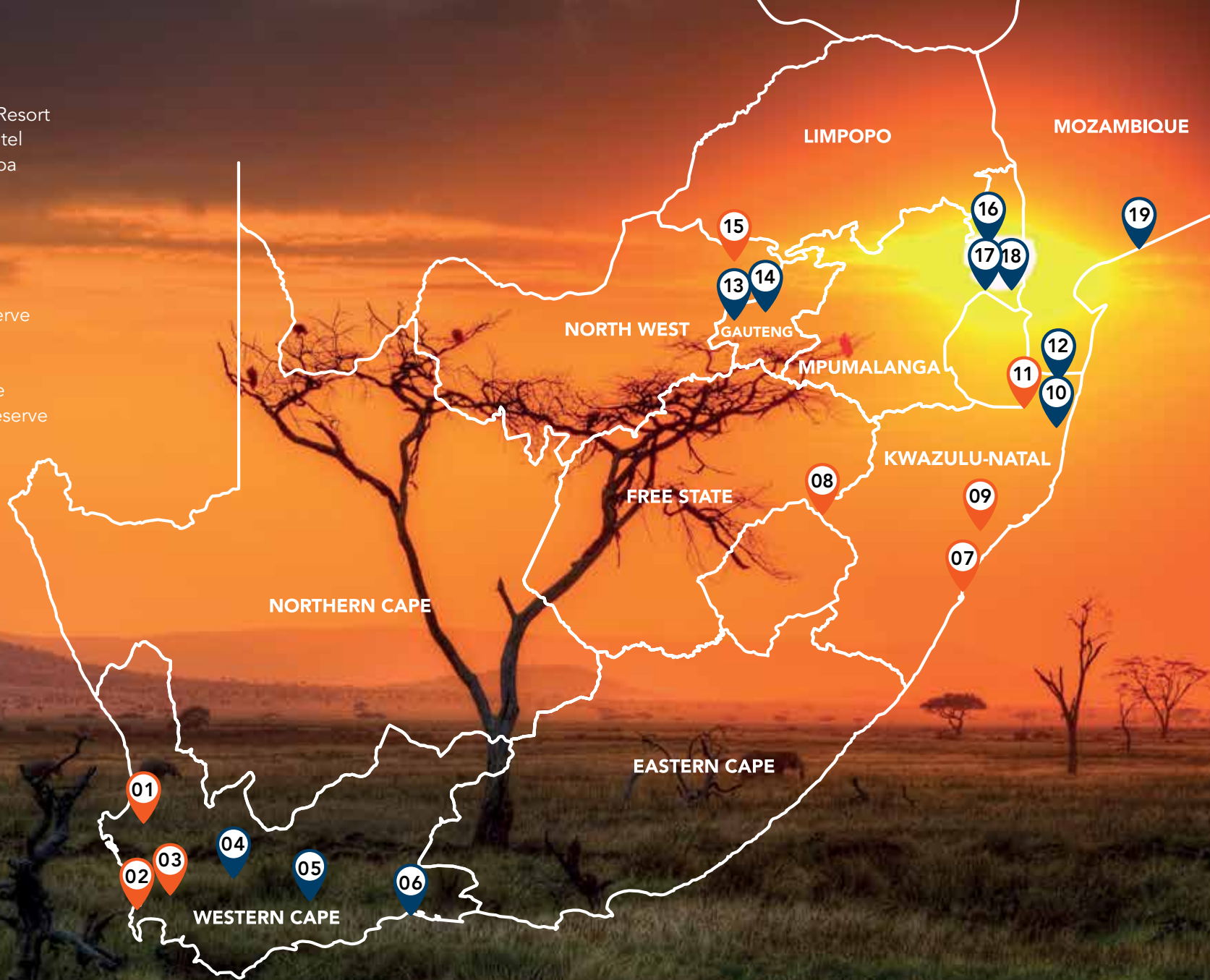
- 01 Piekenierskloof Mountain Resort
- 02 The Peninsula All-Suite Hotel
- 03 Le Franschhoek Hotel & Spa
- 04 Avalon Springs
- 05 Stonehill River Lodge
- 06 Oaklands on the Knoll
- 07 Blue Marlin Hotel
- 08 Little Switzerland Resort
- 09 Tala Collection Game Reserve
- 10 Nibela Lake Lodge
- 11 Jozini Tiger Lodge & Spa
- 12 Royal Thonga Safari Lodge
- 13 Mount Savannah Game Reserve
- 14 Waterfront Guest House
- 15 Finfoot Lake Reserve
- 16 Burchell's Bush Lodge
- 17 Mjejane Bush Camp
- 18 Jackalberry Ridge
- 19 Bilene Club Lodge



LEISURE



CONFERENCE/  
WEDDING FACILITIES



310 Main Road, Bryanston 2021, Gauteng, South Africa | PO Box 786027, Sandton 2146, Gauteng,  
South Africa | T: +27 (0)11 267 8300 | F: +27 (0)11 706 1044 | 24hr Central Reservations:  
+27 (0)861 010 347 | E: [reservations@dreamresorts.co.za](mailto:reservations@dreamresorts.co.za) | [www.dreamresorts.co.za](http://www.dreamresorts.co.za)



**DREAM**  
HOTELS & RESORTS





#### CITRUSDAL | WESTERN CAPE

171km from Cape Town International Airport

N7, Piekenierskloof Pass

T: +27 (0)22 921 3574

E: pkloof@dreamresorts.co.za

24hr Central Reservations: +27 (0)86 101 0347

E: piekenierskloof@dreamresorts.co.za

Rooms: 22 hotel rooms, 16 chalets

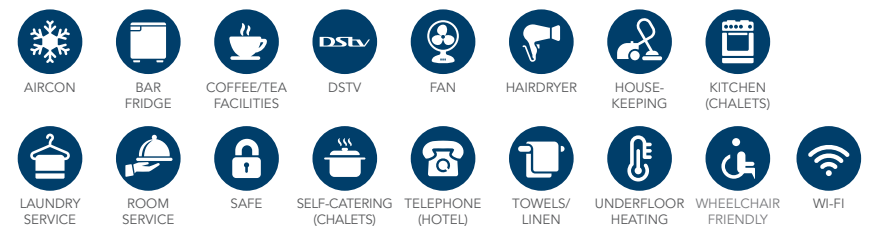
### ADVENTURE AWAITS IN THE CEDERBERG MOUNTAINS

A gentle meander along the winding curves of Piekenierskloof Pass will bring you to the welcoming sight of Piekenierskloof Mountain Resort. Perched at the top of the pass, overlooking the charming town of Citrusdal, Piekenierskloof delivers uninterrupted views of the spectacular Cederberg. This resort is modern, yet cosy, with top-notch conferencing facilities and a choice of hotel suites and self-catering chalets (sleeping up to 6 guests) overlooking lush rolling lawns and a sparkling outdoor pool. The service is second to none – you can expect genuine country hospitality, good food, tons of activities and free Wi-Fi to complete your stay.

### RESORT FACILITIES



### ROOM FACILITIES







## CONFERENCE FACILITIES



AIRCON



COFFEE/TEA  
FACILITIES



CONFERENCE  
ROOMS



PARKING



PODIUM



PROJECTOR  
& SCREEN



TEAM  
BUILDING



WHEELCHAIR  
FRIENDLY



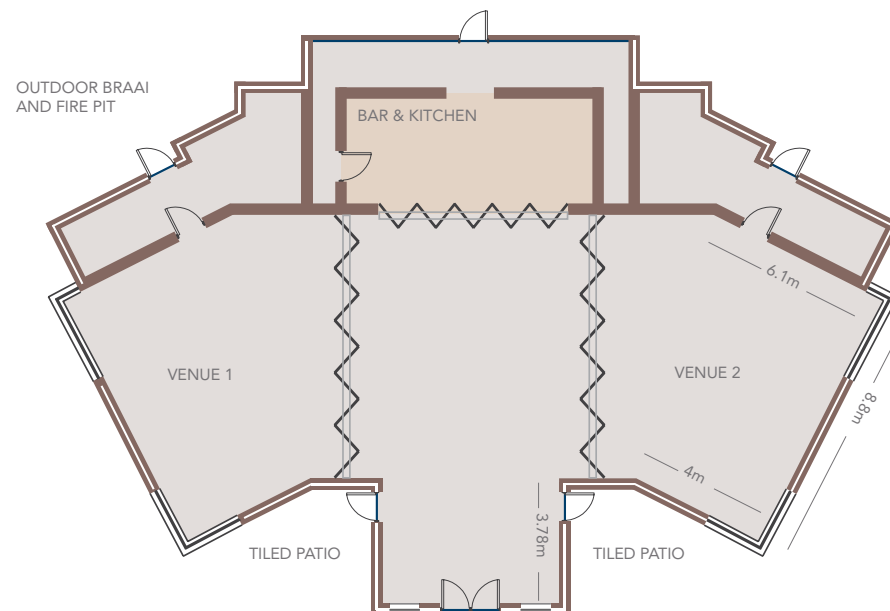
WI-FI

## CONTACT

T: +27 (0)22 921 3574

E: [pkloof@dreamresorts.co.za](mailto:pkloof@dreamresorts.co.za)

SEATING	VENUE 1	VENUE 2	VENUE 1 + 2
SCHOOL ROOM	60 pax	60 pax	120 pax
BOARDROOM	26 pax	26 pax	-
BANQUET	60 pax	60 pax	120 pax
CINEMA	60 pax	60 pax	120 pax
U-SHAPE	40 pax	40 pax	-







#### CAPE TOWN | WESTERN CAPE

25km from Cape Town  
International Airport

313 Beach Road, Sea Point  
T: +27 (0)21 430 7777  
E: hotel@peninsula.co.za

24hr Central Reservations: +27 (0)86 101 0347  
E: peninsula@dreamresorts.co.za

Rooms: 110 apartments

### EXPERIENCE CAPE TOWN IN STYLE

Set in the cosmopolitan suburb of Sea Point, guests are just a short walk to an array of trendy restaurants, bars and shops, set against the backdrop of Lion's Head. This 4 star hotel provides stylish accommodation in modern suites and all rooms are ocean facing. Enjoy a tranquil alfresco setting at Sunset Restaurant, Faces Bar or Strolla Restaurant – the perfect spot for a refreshing sundowner after a busy day. The hotel's close location to the CTICC and City Bowl also makes it an ideal option for business travellers. For families, the white beaches of Clifton and Camps Bay are within close proximity, along with Cape Town's top attractions.

### RESORT FACILITIES



### ROOM FACILITIES







## CONFERENCE FACILITIES



AIRCON



COFFEE/TEA  
FACILITIES



CONFERENCE  
ROOMS



PARKING



PODIUM



PROJECTOR  
& SCREEN



SHUTTLE  
SERVICE



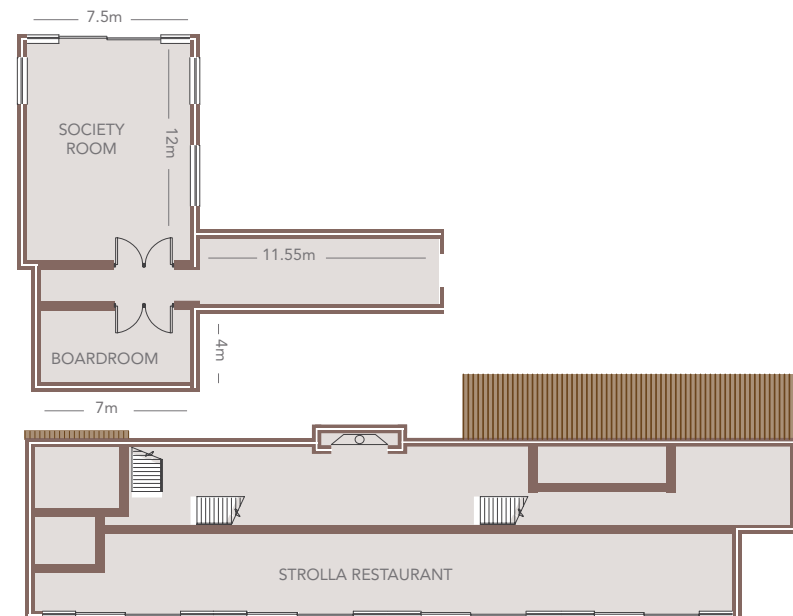
WI-FI

SEATING	SOCIETY ROOM	BOARD-ROOM	STROLLA
SCHOOL ROOM	60 pax	15 pax	-
BOARDROOM	30 pax	12 pax	-
BANQUET	80 pax	-	100 pax
CINEMA	110 pax	25 pax	-
U-SHAPE	25/45 pax	8 pax	-

## CONTACT

T: +27 (0)21 430 7777

E: [confer@peninsula.co.za](mailto:confer@peninsula.co.za)







## LE FRANSCHHOEK HOTEL & SPA



### FRANSCHHOEK | WESTERN CAPE

75km from Cape Town  
International Airport

16 Minor Road, Franschhoek  
T: +27 (0)21 876 8900

E: lfhoek@dreamresorts.co.za  
24hr Central Reservations: +27 (0)86 101 0347

Rooms: 21 standard rooms, 7 standard family  
rooms, 15 suites, 18 deluxe rooms,  
18 villas

## EXPERIENCE LUXURY IN THE CAPE WINELANDS

Enjoy the perfect getaway, close enough to Franschhoek to indulge in day-to-day village life, but far enough for a tranquil retreat. Le Franschhoek's Cape Dutch-inspired architecture, manicured gardens and refined interiors are incredibly easy on the eye. Choose from standard and deluxe rooms, suites and self-catering villas, each thoughtfully decorated. Spend the day reclining by the pool or visit the on-site Camelot Spa. Sunsets are best enjoyed at the Terrace Bar and Lounge with pre-dinner drinks watching the surrounding peaks change colour. This 4 star Franschhoek hotel has two restaurants on-site if you fancy staying in for the night.

## RESORT FACILITIES



## ROOM FACILITIES







## CONFERENCE FACILITIES



AIRCON



COFFEE/TEA  
FACILITIES



CONFERENCE  
ROOMS



PARKING



PODIUM



PROJECTOR  
& SCREEN



TEAM  
BUILDING



WI-FI

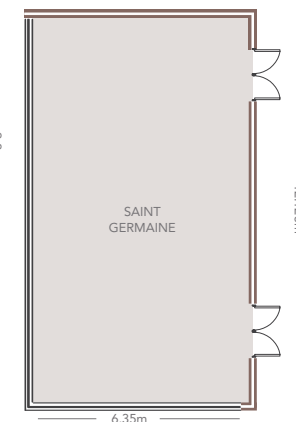
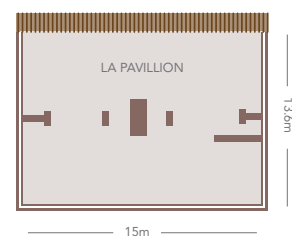
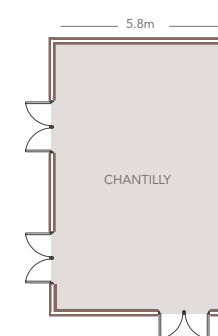
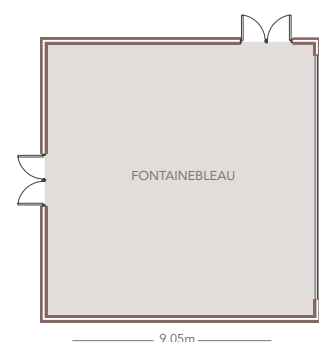
## CONTACT

T: +27 (0)21 876 8900

E: [banqueting@lefranschhoek.co.za](mailto:banqueting@lefranschhoek.co.za)

SEATING	FONTAINEBLEAU	LA PAVILLON
SCHOOL ROOM	20 pax	60 pax
BOARDROOM	15 pax	-
BANQUET	30 pax	60 pax
CINEMA	30 pax	80 pax
U-SHAPE	20 pax	-

SEATING	CHANTILLY	ST GERMAINE
SCHOOL ROOM	20 pax	40 pax
BOARDROOM	10 pax	18 pax
BANQUET	20 pax	40 pax
CINEMA	30 pax	50 pax
U-SHAPE	15 pax	30 pax







## CONFERENCE FACILITIES



AIRCON



COFFEE/TEA  
FACILITIES



CONFERENCE  
ROOMS



PARKING



PODIUM



PROJECTOR  
& SCREEN



TEAM  
BUILDING



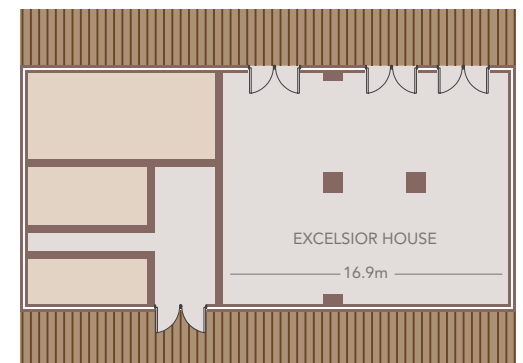
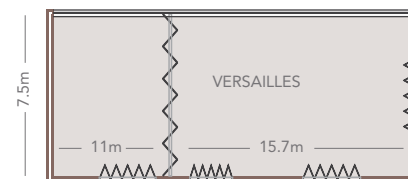
WI-FI

## CONTACT

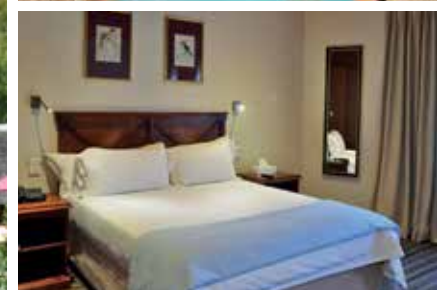
T: +27 (0)21 876 8900

E: [banqueting@lefranschhoek.co.za](mailto:banqueting@lefranschhoek.co.za)

SEATING	WINE- HOUSE	VERSAILLES	EXCELSIOR HOUSE
SCHOOL ROOM	40 pax	80 pax	100 pax
BOARDROOM	20 pax	20 pax	20 pax
BANQUET	40 pax	80 pax	100 pax
CINEMA	100 pax	120 pax	120 pax
U-SHAPE	20 pax	40 pax	20 pax







#### MONTAGU | WESTERN CAPE

185km from Cape Town  
International Airport

Uitvlucht Street, Montagu, Klein Karoo  
T: +27 (0)23 614 1150

E: [avalonsprings@dreamresorts.co.za](mailto:avalonsprings@dreamresorts.co.za)  
24hr Central Reservations: +27 (0)86 101 0347

Rooms: 24 hotel rooms, 30 apartments,  
28 chalets

#### SOAK UP MONTAGU FROM YOUR POOL LOUNGER

Just two hours' drive from Cape Town, guests will find themselves frolicking in this watery arena of steamy pools, while enjoying all the benefits a resort-style holiday has to offer. The service is top-notch, the atmosphere effortless and the accommodation plentiful, ranging from hotel rooms and chalets to self-catering studio apartments and even wheelchair-friendly garden suites. The Cogman's Restaurant and Avacabana Bar ensure that you will never go hungry during your stay, with other facilities including a children's play area, a café, lounge and private spa. Avalon Springs offers more great activities such as hiking, teeing off on the mini-golf greens and a tennis court.

#### RESORT FACILITIES



#### ROOM FACILITIES







### SWELLENDAM | WESTERN CAPE

214km from Cape Town  
International Airport

Portion 12 of Bakkelysdrift, Farm No. 267

T: +27 (0)28 007 0076

E: [stonehillr@dreamresorts.co.za](mailto:stonehillr@dreamresorts.co.za)

24hr Central Reservations: +27 (0)86 101 0347

Rooms: 11 villas

### FAMILY TIME ALONG THE BREEDE RIVER

Surrounded by milkwood trees and giant aloes, this idyllic setting is the perfect pit-stop for those seeking self-catering accommodation. With magnificent mountain views, waking up in the morning has never been easier. Think open-plan kitchens, seating areas with floor-to-ceiling windows and indoor fireplaces. Witness stunning sunsets from the comfort of your private verandah, braai crackling in the background and a private jacuzzi (in selected units) ready to melt away your stress. Be sure to explore the charming, historic town centre of Swellendam. Outdoor enthusiasts will enjoy the array of activities on offer, from hiking and biking trails, to river rafting and other water related activities.

### RESORT FACILITIES



### UNIT FACILITIES







# Oaklands

## ON THE KNOLL

LIVE & PLAY IN KNYSNA

### KNYSNA | WESTERN CAPE

40km from Plettenberg Airport

4972 Lellieskloof, Knysna

E: oaklands@dreamresorts.co.za

24hr Central Reservations: +27 (0)86 101 0347

Rooms: 6 duplexes

## EXPLORE THE PICTURESQUE GARDEN ROUTE

Our delightful secure complex, nestled among oak trees and landscaped gardens with views of the Knysna Lagoon, is a mere 500 metres from Knysna central. The 2 bedroom duplexes are fully-equipped with an open-plan lounge and kitchen, outside patio with braai facilities, upstairs master bedroom with private balcony and a second bedroom. All units are fully self-catering. Spend the day discovering one of the many local attractions or soaking up the sun and sea at nearby Buffels Bay, Brenton-On-Sea or Plettenberg Bay. There is also a plunge pool and clubhouse at the complex.

## RESORT FACILITIES



BARGE



GAMES ROOM



PLUNGE POOL

## UNIT FACILITIES



BRAAI



COFFEE/TEA FACILITIES



DSTV



HAIR DRYER



HOUSE-KEEPING



KITCHEN



SAFE



SELF-CATERING



TOWELS/LINEN





**Blue Marlin**  
HOTEL



**SCOTTBURGH | KWAZULU-NATAL**

108km from King Shaka  
International Airport

180 Scott Street, Scottburgh  
T: +27 (0)39 978 3361

E: [bluemarlin@dreamresorts.co.za](mailto:bluemarlin@dreamresorts.co.za)  
24hr Central Reservations: +27 (0)86 101 0347

Rooms: 110 hotel rooms

## ENDLESS SUMMER ON THE SUNNY SOUTH COAST

The Blue Marlin Hotel, just 40 minutes south of Durban, is one of KwaZulu-Natal South Coast's most iconic hotels. With 110 rooms and exquisite sea views, the hotel offers comfortable accommodation and a range of facilities. Subtropical gardens, superior service, sparkling pools and the warm Indian Ocean on your doorstep, make this your ideal family holiday getaway. Meet new friends in the Ibis Bar, sit down to a memorable meal at the Lighthouse Restaurant or kick back and relax with a cocktail at the Big Blu pool bar overlooking the bay. From the beach to the games area, guests of all ages will love everything the Blue Marlin has to offer.

## RESORT FACILITIES



BAR



BEACH



CONFERENCE  
FACILITIES



DIVE  
CENTRE



GAMES  
ROOM



KIDS  
PROGRAMME



MINI-GOLF



POOL



RECREATION  
& GAMES



RESTAURANT



SPA



WEDDINGS

## ROOM FACILITIES



AIRCON



BAR  
FRIDGE



COFFEE/TEA  
FACILITIES



DSTV



FAN



HAIRDRYER



HOUSE-  
KEEPING



ROOM  
SERVICE



SAFE



TELEPHONE



TOWELS/  
LINEN



WI-FI





## CONFERENCE FACILITIES



AIRCON



COFFEE/TEA  
FACILITIES



CONFERENCE  
ROOMS



PARKING



PODIUM



PROJECTOR  
& SCREEN



SHUTTLE  
SERVICE



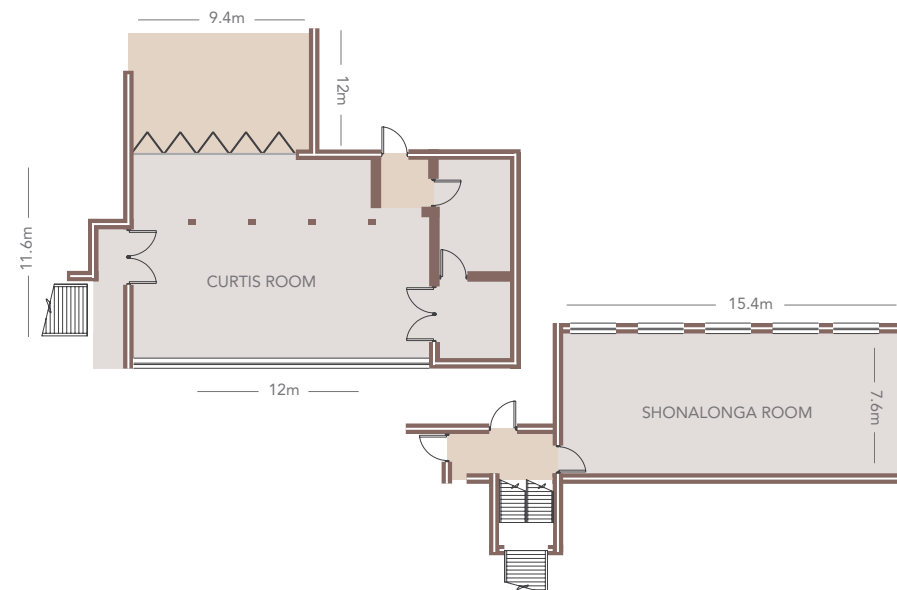
WI-FI

## CONTACT

T: +27 (0)39 978 3361

E: [conf@bluemarlin.co.za](mailto:conf@bluemarlin.co.za)

SEATING	CURTIS ROOM	SHONALONGA ROOM
SCHOOL ROOM	60 pax	60 pax
BOARDROOM	48 pax	48 pax
BANQUET	80 pax	on request
CINEMA	100 pax	100 pax
U-SHAPE	40 pax	40 pax







#### CAMPERDOWN | PIETERMARITZBURG

98km from King Shaka International Airport

R603 Umbumbulu Road, Camperdown

T: +27 (0)31 781 8000

E: tala@dreamresorts.co.za

24hr Central Reservations: +27 (0)86 101 0347

Paperbark Lodge: 12 rooms

Paperbark House: 7 rooms

Leadwood Lodge: 6 luxury cottages

Leadwood Manor House:

3 en suite rooms and the presidential suite

Figtreet House: 5 en suite rooms (self-catering)

Aloe Lodge: 7 rooms

Fisherman's Cottage: 2 rooms (self-catering)

#### STAY IN THE HEART OF A WILDLIFE CONSERVANCY

Tala offers a splendid mix of rooms across a collection of lodges and houses, including self-catering in our Fisherman's Cottage to our newly refurbished, exclusive Leadwood Manor House. Dining options include La Tala and Paperbark Restaurants as well as traditional outdoor bomas, making it ideal for day conferences, special occasions, weddings and tour groups. Tala spans some 3000 hectares, encompassing a mix of acacia thornveld, open grassland and a sensitive wetland, which attracts more than 380 bird species and plenty of big game. Day visitors are welcome and there are picnic and braai areas. Activities include mountain biking, game drives, paintball, archery and so much more.

#### RESORT FACILITIES



ARCHERY



BAR



BRAAI



CONFERENCE  
FACILITIES



FIRE  
PLACE



FISHING



GAME  
DRIVES



MOUNTAIN  
BIKING



PAINTBALL



POOL



RESTAURANT



TOURIST  
ATTRACTIONS



WEDDINGS

#### ROOM FACILITIES



AIRCON



BAR FRIDGE  
(LEADWOOD)



COFFEE/TEA  
FACILITIES



HAIRDRYER  
(AT RECEPTION)



HOUSE-  
KEEPING



SAFE  
(LEADWOOD)



SELF-CATERING  
(SELECTED)

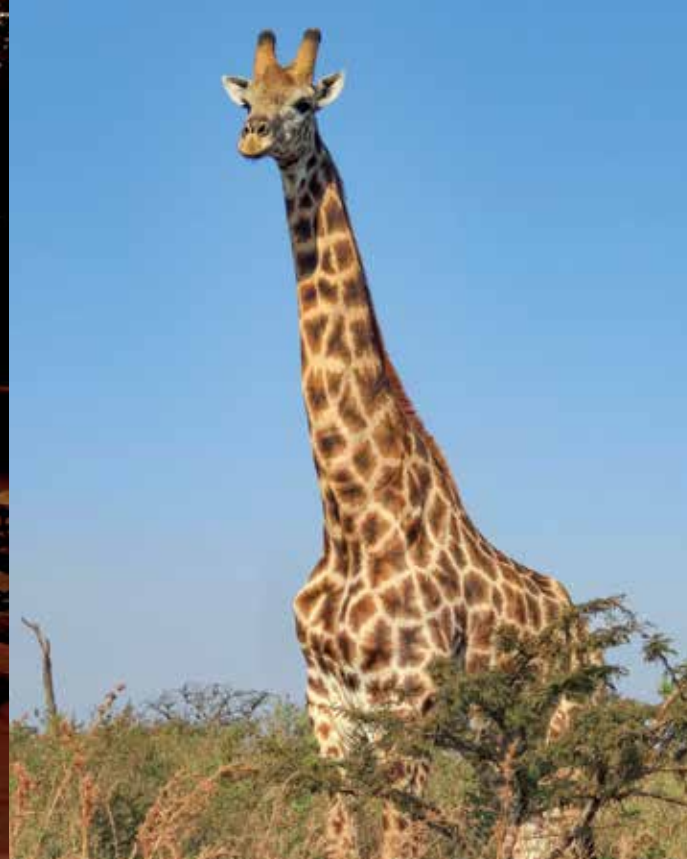


TOWELS/  
LINEN



WI-FI





## CONFERENCE FACILITIES



AIRCON



COFFEE/TEA  
FACILITIES



CONFERENCE  
ROOMS



PARKING



PODIUM



PROJECTOR  
& SCREEN



TEAM  
BUILDING



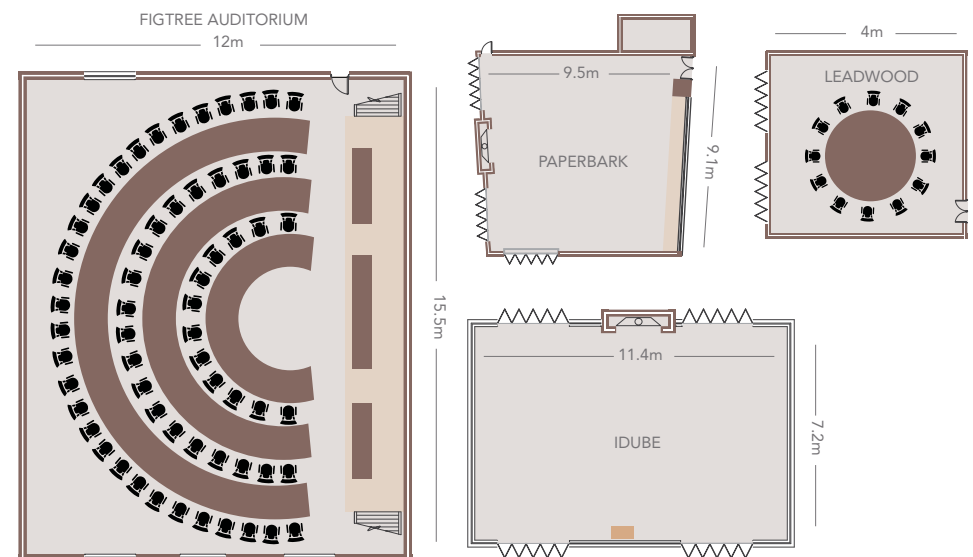
WI-FI

### CONTACT

T: +27 (0)31 781 8000  
E: functions@tala.co.za

SEATING	FIGTREE AUDITORIUM	PAPERBARK
SCHOOL ROOM	-	30 pax
BOARDROOM	-	20 pax
CINEMA	60 pax	50 pax
U-SHAPE	-	20 pax

SEATING	iDUBE	LEADWOOD
SCHOOL ROOM	30 pax	-
BOARDROOM	20 pax	11pax
CINEMA	50 pax	-
U-SHAPE	20 pax	-







**HLUHLUWE | KWAZULU-NATAL**

282km from King Shaka  
International Airport

Road A1115, Kwa-Nibela  
Peninsula, Hluhluwe  
T: +27 (0)35 562 9005

E: nibelalodge@dreamresorts.co.za  
24hr Central Reservations: +27 (0)86 101 0347

Rooms: 10 lodge chalets, 1 deluxe chalet,  
8 self-catering units

## IMMERSE YOURSELF IN NATURE ON THE BANKS OF TRANQUIL LAKE ST. LUCIA

Nibela Lake Lodge is ideally located to deliver a nature-based holiday with a difference for the whole family. This area is blessed by the waters of Lake St. Lucia, an estuarine lake system which sustains an abundance of birds and wildlife which proves that you don't have to make your way to the Kruger to see it all. Once you arrive, you will be rewarded with your own private haven in beautifully appointed timber chalets with private balconies and lakeside views. The main lodge offers an outdoor viewing deck, an ideal spot for sundowners served just before dinner at our Lakeview Restaurant. Spend time venturing out to explore the surrounding area of iSimangaliso Wetlands Park and beyond.

## RESORT FACILITIES



## ROOM FACILITIES







#### JOZINI | KWAZULU-NATAL

312km from King Shaka  
International Airport

1 Main Road, Jozini  
T: +27 (0)35 572 1020

E: [jozini@dreamresorts.co.za](mailto:jozini@dreamresorts.co.za)

24hr Central Reservations: +27 (0)86 101 0347

Rooms: 70 rooms

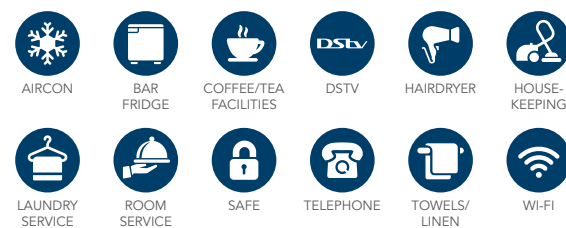
#### A PICTURESQUE EXPERIENCE COMPARABLE TO LAKE KARIBA

Be it a business trip, honeymoon or family getaway, you will be drawn to Jozini, not just for how you're treated, but for how being here makes you feel. The atmosphere is relaxed and effortless, backed by top-notch service and personalised hospitality. From the private Mangwanani Spa, to the gym and rim-flow pool, the lodge's facilities will complete your stay. Extensive conference and banqueting facilities are on offer for hosting international tour groups, corporate conferences, weddings and more. Being well-positioned amongst St. Lucia, Hluhluwe-Imfolozi Park, Ndumu Game Reserve and Tembe Elephant Park, a day of game viewing, tiger fishing, birding and picnicking is an easy feat.

#### RESORT FACILITIES



#### ROOM FACILITIES







## CONFERENCE FACILITIES



AIRCON



COFFEE/TEA  
FACILITIES



CONFERENCE  
ROOMS



PARKING



PODIUM



PROJECTOR  
& SCREEN



SHUTTLE  
SERVICE



WI-FI

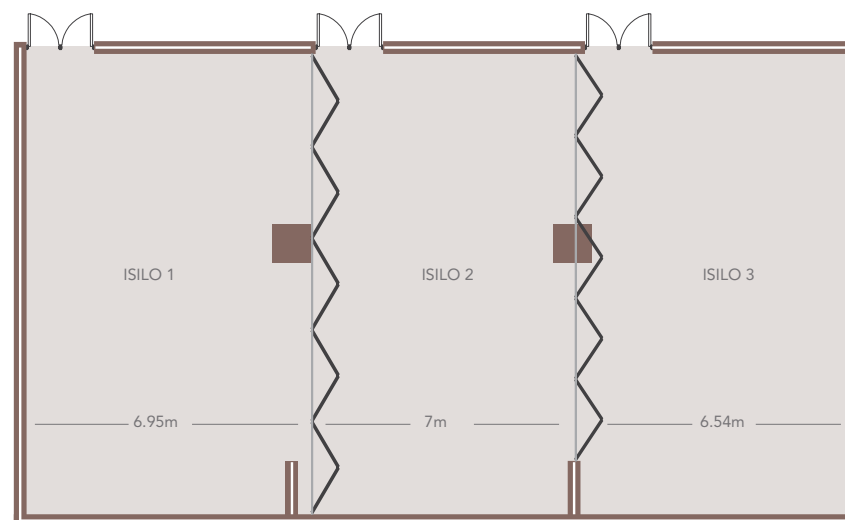
## CONTACT

T: +27 (0)35 572 1020

E: [conferencing@jozinitigerlodge.co.za](mailto:conferencing@jozinitigerlodge.co.za)

SEATING	SILO (MAIN)	SILO 1
SCHOOL ROOM	220 pax	60 pax
BOARDROOM	-	-
BANQUET	180 pax	60 pax
CINEMA	20 pax	90 pax
U-SHAPE	-	40 pax

SEATING	SILO 2	SILO 3
SCHOOL ROOM	60 pax	60 pax
BOARDROOM	-	-
BANQUET	60 pax	60 pax
CINEMA	90 pax	90 pax
U-SHAPE	40 pax	40 pax







## CONFERENCE FACILITIES



AIRCON



COFFEE/TEA  
FACILITIES



CONFERENCE  
ROOMS



PARKING



PODIUM



PROJECTOR  
& SCREEN



SHUTTLE  
SERVICE



WI-FI

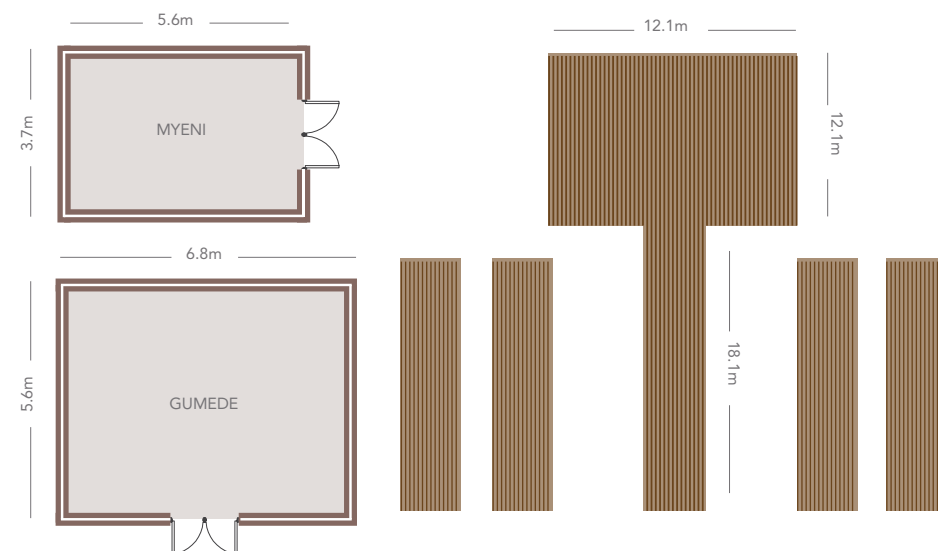
## CONTACT

T: +27 (0)35 572 1020

E: [conferencing@jozinitigerlodge.co.za](mailto:conferencing@jozinitigerlodge.co.za)

SEATING	GUMEDE	MYENI
SCHOOL ROOM	24 pax	-
BOARDROOM	20 pax	10 pax
BANQUET	-	-
CINEMA	20 pax	-
U-SHAPE	12 pax	-

SEATING	JETTY	BOMA
	180 pax	100 pax







ROYAL THONGA  
SAFARI LODGE  
TEMBE ELEPHANT PARK



**MANGUZI | NORTHERN KWAZULU-NATAL**  
385km from King Shaka International Airport

Tembe Elephant Park, Sihangwane,  
Maputaland, KwaZulu-Natal  
T: +27 (0) 72 620 4704

E: royalthonga@dreamresorts.co.za  
24hr Central Reservations: +27 (0)86 101 0347

Rooms: 10 chalets, 4 family chalets

## SURROUND YOURSELF WITH AFRICA'S CULTURAL HERITAGE AND THE BIG 5

This 4 star establishment is the crown jewel of 'the garden province', quietly nestled within the perimeter of the game-rich Tembe Elephant Park. Aside from the bounty of wildlife, the lodge is a treasure trove of outdoor activities that will occupy even the most adventurous visitors. Enjoy trips to the local village, the nearby cashew farm, butterfly tent and Kosi Bay, where families and friends can embark on snorkelling excursions and whale watching boat trips. Of course, if you want to put your feet up and unwind, this is just the place to do it. There is a swimming pool, on-site restaurant and plenty of quiet corners to enjoy a moment to yourself.

## RESORT FACILITIES



## ROOM FACILITIES







**LITTLE  
SWITZERLAND  
RESORT**

#### NORTHERN DRAKENSBURG KWAZULU-NATAL

297km from King Shaka International Airport  
322km from O.R. Tambo International Airport

R74 near Oliviershoek Pass, Bergville  
T: +27 (0)36 438 2500

E: littleswitzer@dreamresorts.co.za  
24hr Central Reservations: +27 (0)86 101 0347

Rooms: 2 honeymoon suites, 4 executive suites  
4 superior suites, 5 deluxe rooms, 5 deluxe  
family rooms, 2 garden rooms, 3 garden  
family rooms, 6 standard family rooms, 16 two  
bedroom chalets, 2 two bedroom pet friendly  
chalets, 6 one bedroom chalets

#### ALPINE CHARM IN THE BREATHTAKING BERG

Revel in serene silence far from traffic and meetings, enjoy our hearty buffet carveries, crackling log fires and perhaps even some pampering at our spa. Relaxation and comfort are yours for the taking at this affordable family accommodation, with plenty of outdoor activities for both kids and adults to complete your stay and guarantee your return. Locally known as "the Berg", the iconic mountain peaks offer every excitement, from serious hiking and hairpin drives to gentle strolls through forested glades and even a spot of culture. Venture out nearby and you will discover the Royal Natal National Park, an addictively beautiful place far from the well-trodden tourist paths, where you can climb, bike, ride horseback, fish and spot birds and wildlife to your heart's content.

#### RESORT FACILITIES



#### ROOM FACILITIES







## CONFERENCE FACILITIES



AIRCON



COFFEE/TEA  
FACILITIES



CONFERENCE  
ROOMS



PARKING



PODIUM



PROJECTOR  
& SCREEN



TEAM  
BUILDING



WI-FI

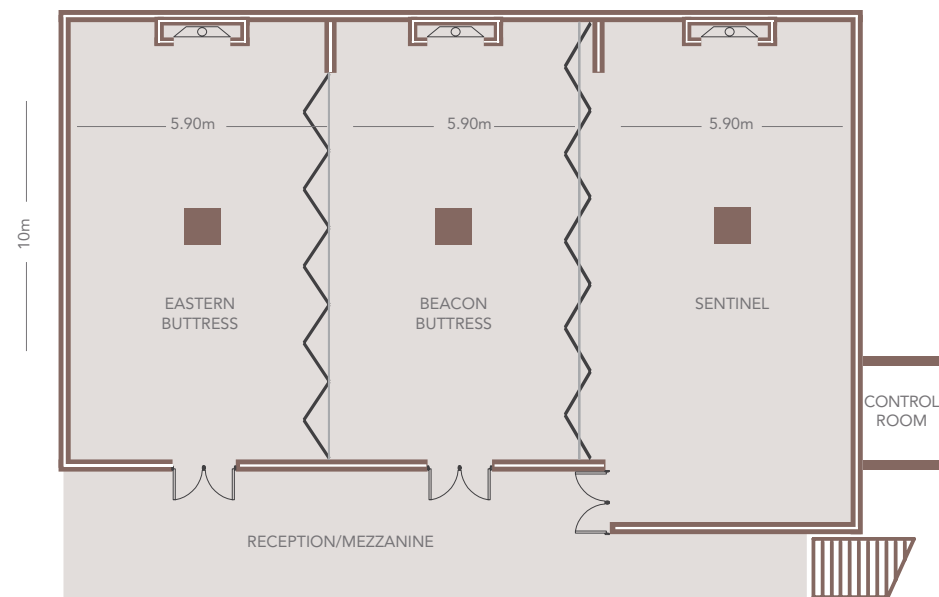
## CONTACT

T: +27 (0)36 438 2500

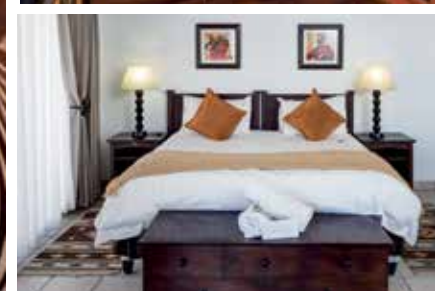
E: [res@lsh.co.za](mailto:res@lsh.co.za)

SEATING	ALL ROOMS	EASTERN & BEACON BUTTRESS	BEACON BUTTRESS & SENTINEL
SCHOOL ROOM	108	72	72
CINEMA	130	80	80
U-SHAPE	60	40	40
WORKSHOP (ROUND TABLES)	90	50	50
HERRINGBONE SEATING	100	50	50
COCKTAIL STANDING	132	88	88

Pax may vary according to seating arrangement  
There are also two boardrooms available







## CRADLE OF HUMANKIND | GAUTENG

36km from Lanseria Airport

54 Farm Danielspruit No. 518

E: [mountsavannah@dreamresorts.co.za](mailto:mountsavannah@dreamresorts.co.za)

24hr Central Reservations: +27 (0)86 101 0347

Rooms: 4 suites

## KEEP IT SOCIAL IN THE CRADLE OF HUMANKIND

Aside from the comfort guests will enjoy in one of our exclusive deluxe suites, one of the main draws of this homely 2000 hectare reserve near Krugersdorp is that it's unfenced. Relaxing around the central campfire area, while watching and listening to the wildlife is one of the best ways to spend an afternoon or evening. Guided game drives are available for those looking to get a better feel for what lies beyond. Stretch out on the main deck with a refreshing cocktail or sip a coffee in the main lounge with its convivial stone fireplace while the kids play outdoors. There's no better way to soak up the sights of the broad valley stretching out to the horizon.

## RESORT FACILITIES



BRAAI



FIRE PLACE



GAME DRIVES



HIKING



MOUNTAIN BIKING



POOL



TOURIST ATTRACTIONS



WI-FI

## ROOM FACILITIES



BAR FRIDGE



COFFEE/TEA FACILITIES



DSTV



FAN



HAIRDRYER



HOUSE-KEEPING



SAFE

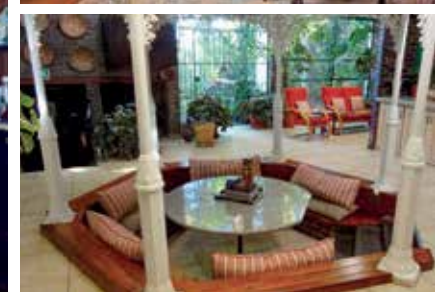


TOWELS/LINEN



SEMI SELF-CATERING





#### RANDBURG | GAUTENG

47km from OR Tambo International Airport  
29km from Lanseria International Airport

32 Tuin Avenue, Randburg, Johannesburg  
T: +27 (0)82 499 4103

E: joanne.gallo@dreamresorts.co.za  
24hr Central Reservations: +27 (0)86 101 0347

Rooms: 5 rooms

### A VICTORIAN GEM IN AN URBAN SETTING

Personal attention meets antique charm in this secure and peaceful Victorian-style setting that speaks of a bygone era. The guest house boasts 5 en suite bedrooms as well as 1 bedroom with a private bathroom. Each of these spacious bedrooms has a personal feel with patios overlooking manicured gardens. The guest house is well situated for restaurants and quality shopping centres making it an ideal stopover for executives, tourists and families. It is ideally suited to cater for your every need, whether you travel for business or leisure.

### RESORT FACILITIES



### ROOM FACILITIES



COFFEE/TEA  
FACILITIES



DSTV



FAN



HAIRDRYER



HOUSE-  
KEEPING



SAFE



TOWELS/  
LINEN



WI-FI





### VAALKOP DAM | PILANESBERG

49km from Pilanesberg  
International Airport

Elands River Game Reserve, Vaalkop Dam  
T: +27 (0)12 277 8900

E: finfoot@dreamresorts.co.za  
24hr Central Reservations: +27 (0)86 101 0347

Rooms: 2 self-catering villas, 26 chalets

## EXPERIENCE AN AUTHENTIC BUSH RETREAT

Finfoot Lake Reserve offers various accommodation options: comfortable chalets, stylish self-catering villas and luxury tents located close to the Vaalkop Dam, ideal for families and groups of friends celebrating a special occasion. The large thatched lapa serves as the main hub at Finfoot Lake Reserve. This open-sided, breezy building is home to the camp's bar and cosy lounge areas where most meals are served. The swimming pool is a popular spot for those looking to put their feet up with a cocktail or two. Bring your bike, go for a paddle on the lake, try a bush walk or game drive, delight in a sunset barge cruise, or how about taking on the Segway safari if you're up for a bit of fun?

## RESORT FACILITIES



## ROOM FACILITIES







## CONFERENCE FACILITIES



AIRCON



COFFEE/TEA  
FACILITIES



CONFERENCE  
ROOMS



PARKING



PODIUM



PROJECTOR  
& SCREEN



TEAM  
BUILDING



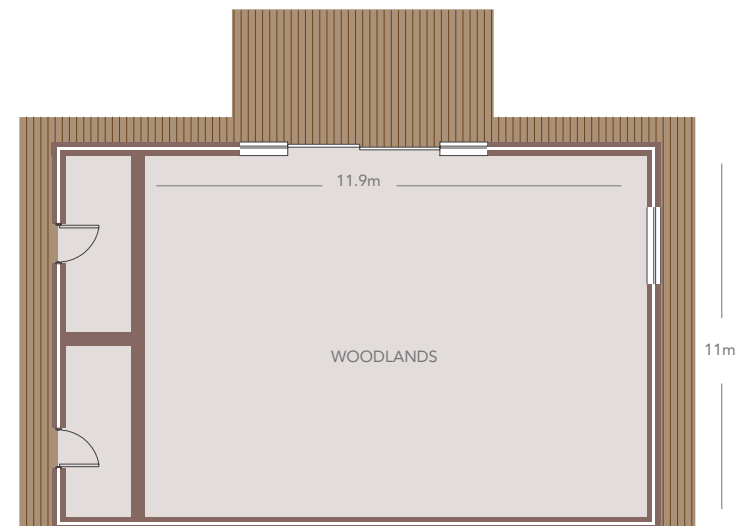
WI-FI

## CONTACT

T: +27 (0)12 277 8900

E: [finfoot.sales@dreamresorts.co.za](mailto:finfoot.sales@dreamresorts.co.za)

SEATING	WOODLANDS
SCHOOL ROOM	60 pax
BOARDROOM	40 pax
BANQUET	-
CINEMA	80 pax
U-SHAPE	60 pax







**BURCHELL'S**  
*bush lodge*



#### PAUL KRUGER GATE | MPUMALANGA

100km from Kruger Mpumalanga  
International Airport

Portia Shabangu Drive, Paul Kruger Gate  
T: +27 (0)13 735 5859

E: burchells@dreamresorts.co.za  
24hr Central Reservations: +27 (0)86 101 0347

Rooms: 21 chalets

### A BUSHVELD EXPERIENCE LIKE NO OTHER

Each comfortable, air-conditioned, self-catering lodge is serviced daily and has its own private braai area. Enjoy coffee and rusks on your own patio while listening to the dawn chorus. Take a walk through the gardens to the Protea Hotel Kruger Gate complex where you can enjoy buffet-style breakfast and à la carte lunches on the sundeck, or dinner under the African skies. Guests can enjoy easy access to the Kruger National Park through the Paul Kruger Gate, which is a mere 200m away from the resort. The swimming pool on the property is a delightful respite after a hot day of game viewing in the Kruger. For the more energetic, there is a variety of sporting facilities available locally.

### RESORT FACILITIES



BRAAI



POOL



TOURIST  
ATTRACTIONS

### UNIT FACILITIES



AIRCON



BAR  
FRIDGE



COFFEE/TEA  
FACILITIES



DSTV



FAN



HAIRDRYER



HOUSE-  
KEEPING



KITCHEN



SAFE



SELF-CATERING



TOWELS/  
LINEN





### KRUGER NATIONAL PARK MPUMALANGA

97km from Kruger Mpumalanga  
International Airport

Mjejane Game Reserve, Hectorspruit  
T: +27 (0)81 160 2775

E: mjejane@dreamresorts.co.za  
24hr Central Reservations: +27 (0)86 101 0347

Rooms: 39 Chalets

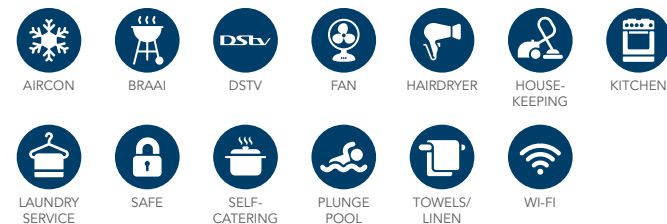
### GAME RESERVE HOLIDAYING AT ITS BEST

Set on the edge of the Crocodile River, this is just the place to sneak off on a safari holiday for two, three or more. There is enough space here for families and friends, thanks to the carefully considered self-catering rooms and suites, ranging from 1 to 4 bedrooms. Each space is fully-equipped with a kitchen, lounge area for family dining and floor-to-ceiling windows leading out to a deck with an outside braai. Surrounded by riverine forest, this family camp in the Kruger lies within the bounds of the elusive leopard, prides of lion and a stunning variety of birdlife. There really is no better place to reconnect with nature and each other.

### RESORT FACILITIES



### ROOM FACILITIES







### MARLOTH PARK | MPUMALANGA

114km from Kruger Mpumalanga  
International Airport

3884 Olifant Drive, Marloth Park  
T: +27 (0)72 057 3447

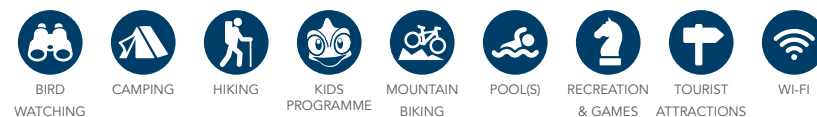
E: jackalberry@dreamresorts.co.za  
24hr Central Reservations: +27 (0)86 101 0347

Rooms: 20 luxury safari tents, 2 campsites

### GLAMPING ON THE DOORSTEP OF THE KRUGER

The stunning luxury tented camps sleep up to 8 guests and each tent has its own viewing deck, splash pool, lapa and braai area. This self-catering family accommodation strikes the right balance between comfort and outdoor-authenticity. When you're not relaxing near the outdoor pool area, self-drive game viewing is the order of the day. After a busy day exploring, stop by one of the local restaurants, or fire up a traditional South African braai or potjie, while kudu, impala and warthog saunter through the camp. Not only is this self-catering family accommodation the perfect base for a holiday near the Kruger, it's also an ideal stop for a trip further afield into Swaziland or Mozambique.

### RESORT FACILITIES



### UNIT FACILITIES







#### PRAIA DO BILENE | MOZAMBIQUE

184km from Maputo International Airport

Avenida da Marginal, Praia do Bilene,  
Bilene District, Gaza Province,  
Mozambique

T: +258 82 514 7571  
+258 20 032 678  
+258 84 585 1225

E: bilene@dreamresorts.co.za  
24hr Central Reservations: +27 (0)86 101 0347

Rooms: 16 Apartments

#### A COASTAL TRAVEL GEM IN MOZAMBIQUE

The self-catering apartments at the lodge are just what you need, with private patios, en suite bathrooms and modern luxuries including Wi-Fi and air conditioning. Uninterrupted views over the Ujembe Lagoon will easily catch your eye, with its shallow shores lined by pure-white beaches. A large sandbar separates this shimmering lagoon from the Indian Ocean, providing a protected area for a variety of watersports. While staying at the lodge, the thriving town of Bilene is just a short walk away with its small but colourful market features fresh produce and brightly-coloured capalanas (sarongs) that fill each rustic store.

#### RESORT FACILITIES



#### UNIT FACILITIES







310 Main Road, Bryanston 2021  
Gauteng, South Africa

PO Box 786027, Sandton 2146  
Gauteng, South Africa

T: +27 (0)11 267 8300  
F: +27 (0)11 706 1044

24hr Central Reservations  
T: +27 (0)861 010 347  
E: [reservations@dreamresorts.co.za](mailto:reservations@dreamresorts.co.za)

[www.dreamresorts.co.za](http://www.dreamresorts.co.za)